

Pre 1970 – Barrel Bolt

Barrel Bolt

- Barrel Bolt measures approx (L) 59mm x (T) 14mm x (H) 18mm as shown in Fig 1
- Check with your local Roads Transport Authority, Authorised Seatbelt Restraint Fitter or Engineer overseeing the installation as to the requirements regarding:
 - Placement and Installation of Barrel Bolt and Suitability for application
 - Position of Barrel Bolt and structural feasibility of new mounting point
 - Angle of Barrel Bolt in relation of pull or load.
- Attach the Barrel Bolt to the 'B' Pillar as shown in Fig. 2 using the 7/16 UNF bolt.
- Suitable for front applications.

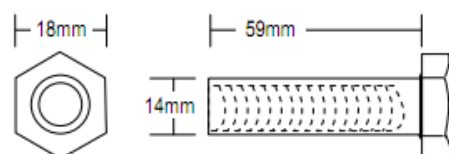


FIGURE 1

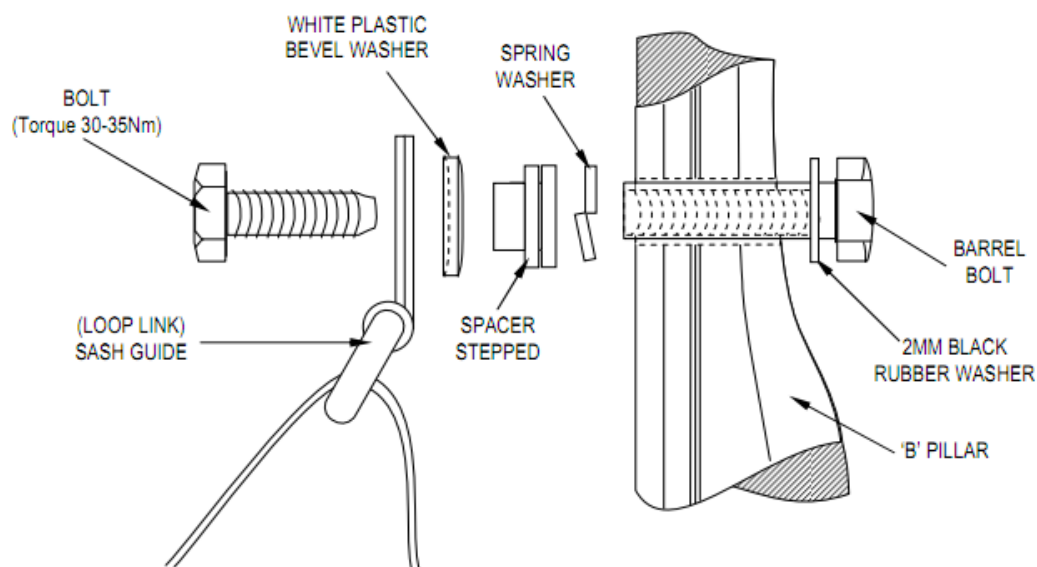


FIGURE 2



5/780 Boundary Rd

COOPERS PLAINS QLD 4108

www.seatsafe.com.au

07 3137 0044

